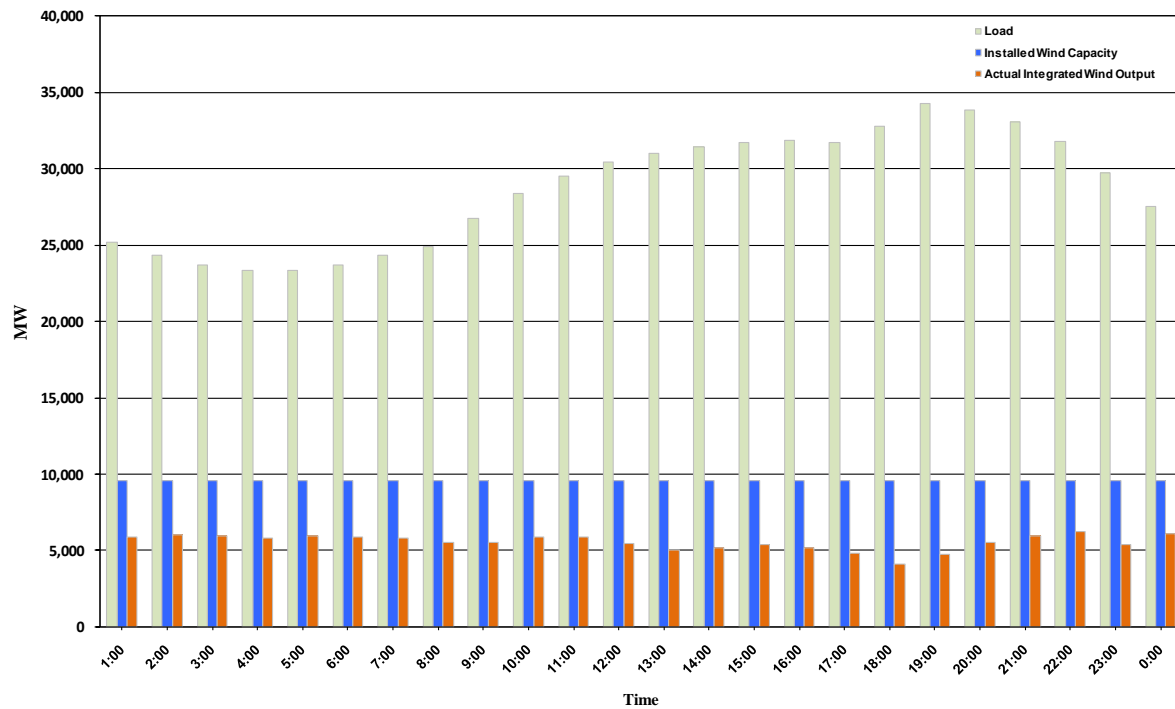




## ERCOT Grid Operations Wind Integration Report: 11/21/10

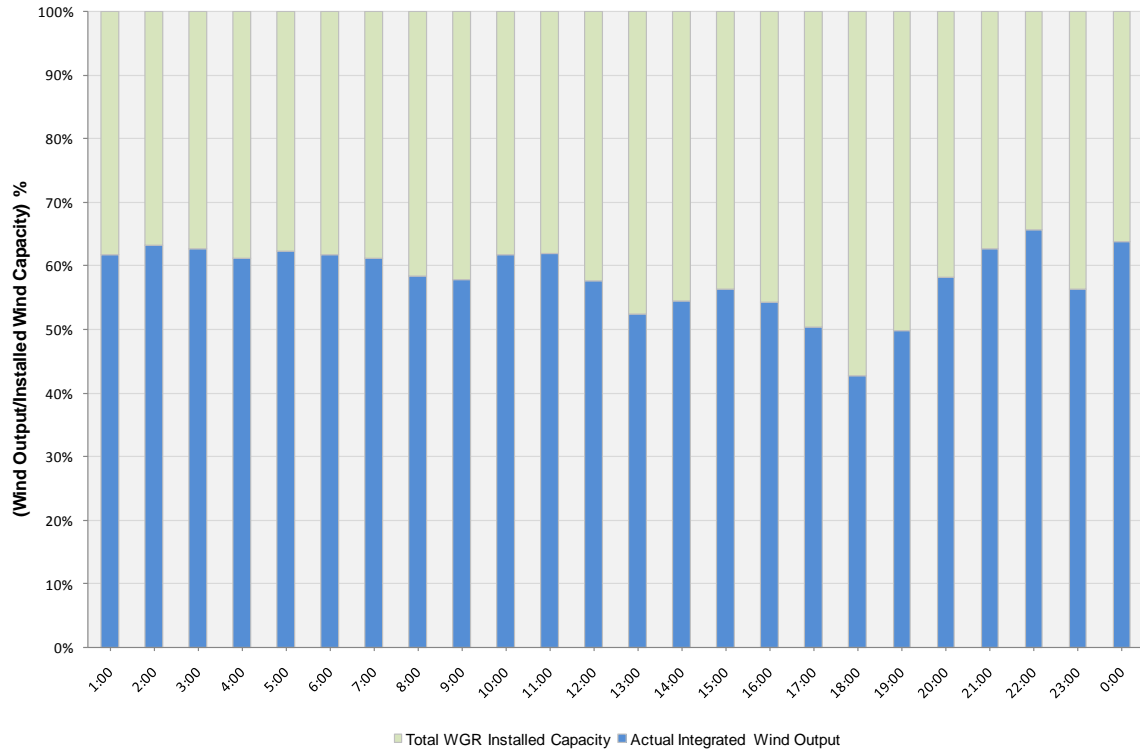
Peak Load	<b>34,253 MW</b>
Load Peak Hour	<b>19</b>
Wind Record 06/12/10	<b>7016 MW</b>
Max Wind value	<b>6638 MW</b>
Wind Peak Hour	<b>21:22:48</b>
Wind Integration %	<b>20.66</b>

Hourly Average Actual Load vs. Actual Wind Output  
11-21-2010

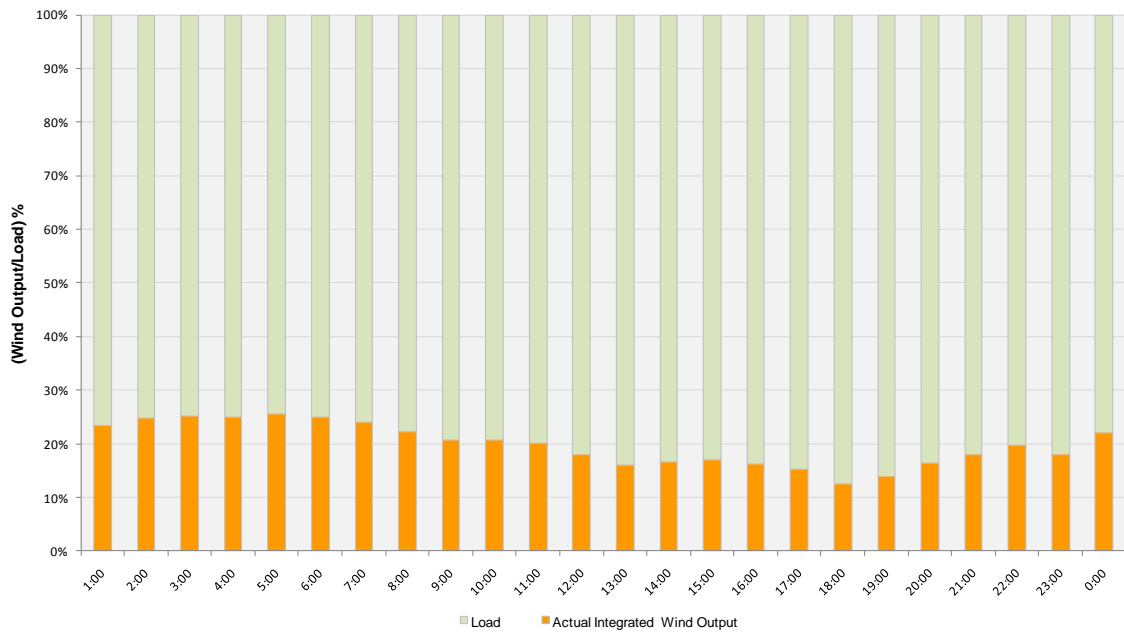




**Actual Wind Output as a Percentage of the Total Installed Wind Capacity**  
**11-21-2010**



**Actual Wind Output as a Percentage of the ERCOT Load**  
**11-21-2010**





ERCOT Load vs. Actual Wind Output 11/14/10 - 11/21/10

